

Park Fletcher Building 6

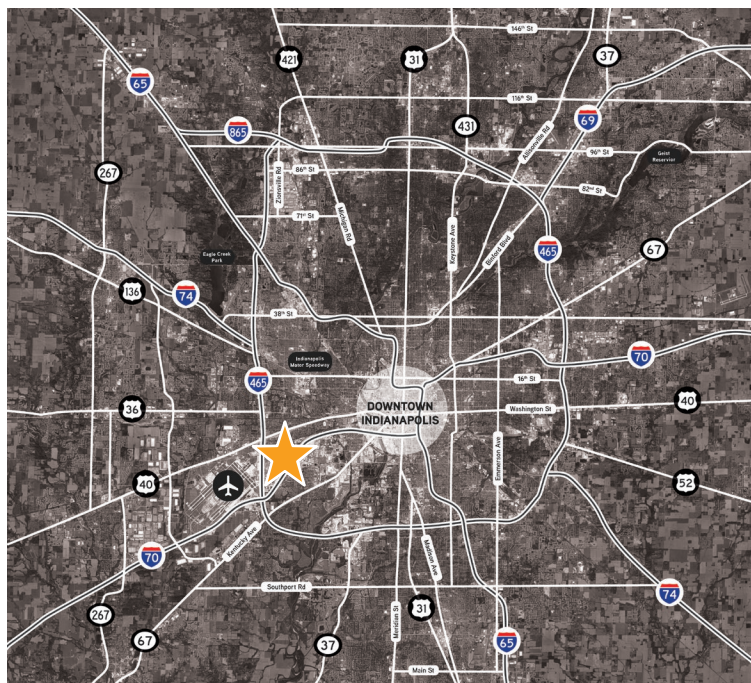
5522 – 5538 W Raymond Street, Indianapolis, IN

FOR LEASE | INDUSTRIAL/OFFICE



PROPERTY HIGHLIGHTS

- 36,180 total SF building
- 12' clear height
- Dock and drive-in loading
- Zoned I-3-S
- New roof, facade and asphalt repaired/stripped in 2016
- New landscaping in 2016
- Located in popular Park Fletcher Business Park
- Convenient interstate access to I-465 & I-70
- Close proximity to Downtown Indianapolis and Indianapolis International Airport
- IndyGo service coming to Park Fletcher – buses will run through the park every 30 minutes



TYLER WILSON SIOR
317.713.2137
tyler.wilson@colliers.com

JASON SPECKMAN SIOR
317.713.2115
jason.speckman@colliers.com

leasing by:



owned by:



FLOOR PLANS + SPECS

SUITE 5528 - 5530

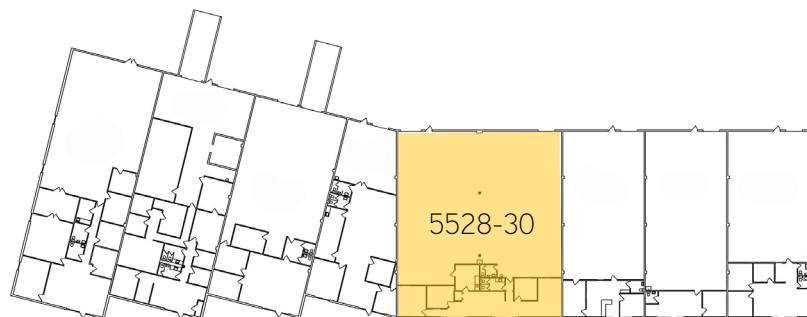
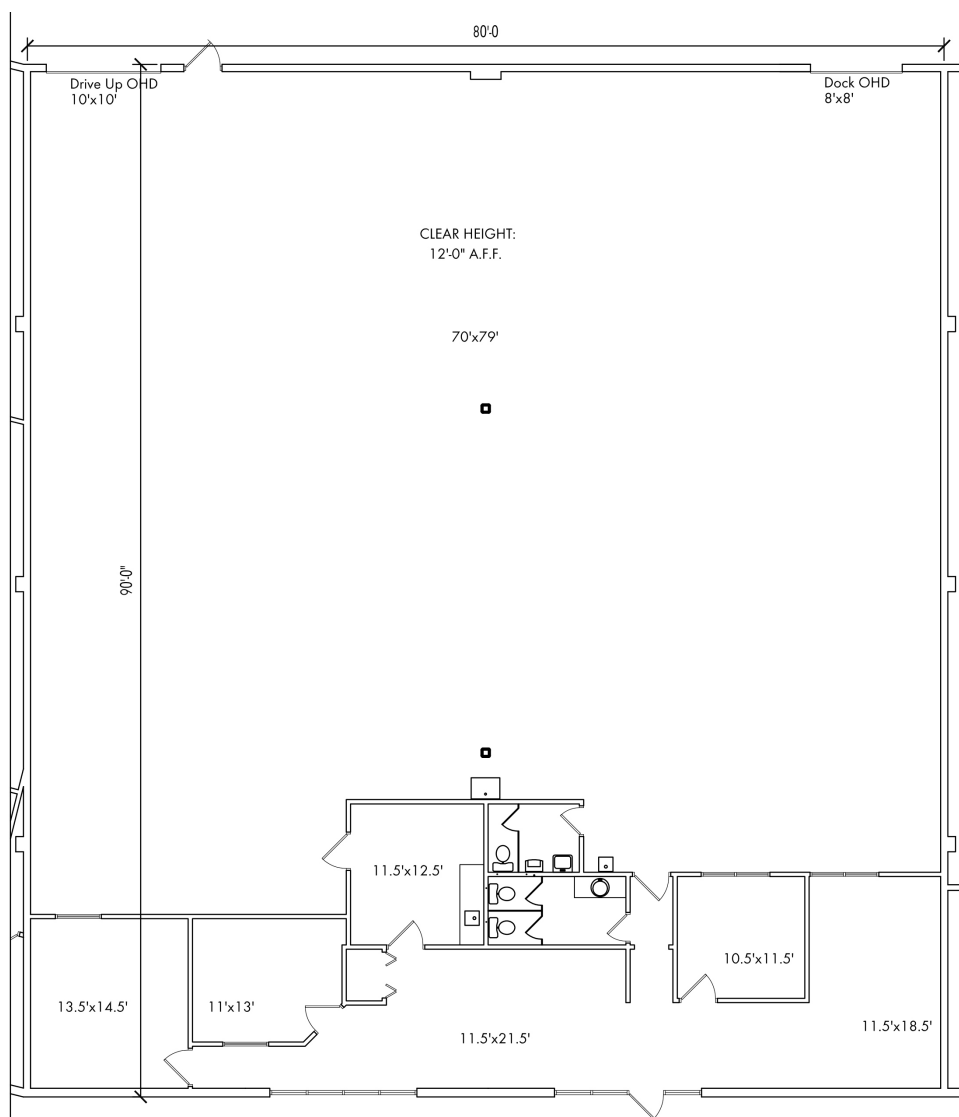
Office SF: 1,596

Warehouse SF: 5,604

TOTAL SF: 7,200

SUITE SPECS

- 12' clear height
- (1) 8' x 8' dock
- (1) 10' x 10' drive-in door
- T-5 lighting
- 120/240 V / 200 amps / 3 phase power
- Air-conditioned warehouse



= SUBJECT SUITE

CONTACT US

TYLER WILSON SIOR

317.713.2137

tyler.wilson@colliers.com

JASON SPECKMAN SIOR

317.713.2115

jason.speckman@colliers.com